

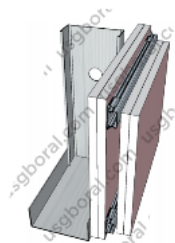
Fire Rating 2 Hours - 1 side (SS-23)

Description

Frame : JayaBMS Wall Track, JayaBMS Deflection Head Track, JayaBMS CStud, JayaBMS Furring

Lining : 4 layers of USG Boral Firestop 16mm (1 side)

Weight : ± 53 kg/m²



| STUD SIZE (mm) | | MAXIMUM HEIGHT (mm) Non-Load Bearing Studs | | | WALL THICKNESS (mm) | FIRE RATING (minutes) | ACOUSTIC RATING (STC) | |
|----------------|-----------|---|----------------|---------------|---------------------|-----------------------|-----------------------|------------------------------|
| Width | Thickness | @600mm centres | @400mm centres | Grade BS 5234 | | | Without Insulation | Insulation Mineral Wool 50mm |
| 64 | 0.5 | 2700 | 3000 | Severe Duty | 153 | 120 | 42 | 43 |
| | 0.7 | 2950 | 3300 | | | 120 | | |
| 76 | 0.5 | 2950 | 3350 | | 165 | 120 | 42 | 43 |
| | 0.7 | 3250 | 3800 | | | 120 | | |
| 92 | 0.5 | 3350 | 3900 | | 181 | 120 | 42 | 43 |
| | 0.7 | 3800 | 4550 | | | 120 | | |
| 100 | 0.5 | 3550 | 4200 | | 189 | 120 | 42 | 43 |
| | 0.7 | 4100 | 5000 | | | 120 | | |
| 150 | 0.7 | 6350 | 7300 | 239 | 120 | 42 | 43 | |